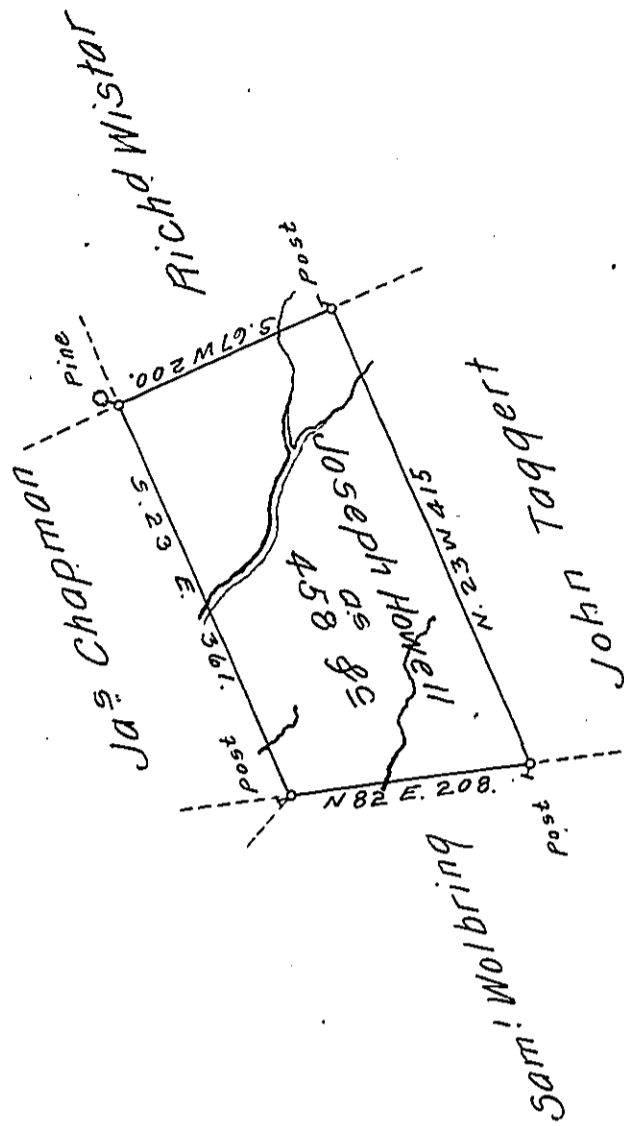


Butler  
Luzerne.



A Draft of a tract of land Called — Situate on the waters of Nescopeck Creek in the County of Luzerne, containing four Hundred & fifty Eight Acres and Allowance. Surveyed for Joseph Howell the 24<sup>th</sup> day of May 179 (obl.) by Virtue of a Warrant dated the 25<sup>th</sup> day of March 1793.

To

Daniel Brodhead Esqr }  
Surv<sup>r</sup> Gen. }

by

W<sup>m</sup> Gray D.S.

IN TESTIMONY that the above is a copy of the original remaining on file in the Department of Internal Affairs of Pennsylvania, made conformably to an Act of Assembly approved the 16th day of February, 1833, I have hereunto set my Hand and caused the Seal of said Department to be affixed at Harrisburg, this seventeenth day of April 1911.

*Henry Howell*  
Secretary of Internal Affairs.